



两种出线方式
Two connection outlets



AIR4-560A

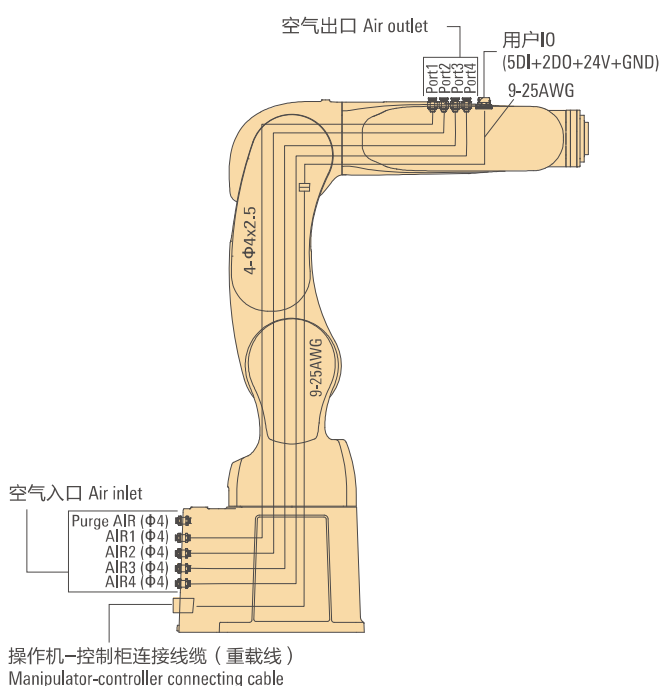
高速度
高精度
高稳定性
小巧、敏捷
高防护等级

High speed
High precision
High stability
Small and Agile
IP65

- 标准循环时间小于 0.33s, 满足追求最短循环时间和最高产量的需求。
The standard cycle time is less than 0.33s, meeting the needs of the maximum output in the shortest time.
- 专用的电机散热设计, 轻松应对 3C 行业高强度高频次重复运动产生的高发热。
Advanced heat dissipation design of motor, enables AIR4-560A to easily cope with the high heat generated by high-intensity repetitive operation in the 3C industry.
- 非常适于狭小空间内作业、3C 制造等行业的高精密生产作业, 主要用于小型工件的装配、搬运、螺接、检测等。
AIR4-560A is very ideal for narrow space operations, as well as highly precise operations in 3C field. Widely used in assembly, handling, screwing and testing of small workpieces.

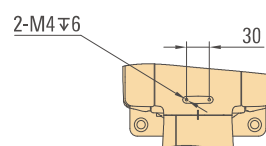
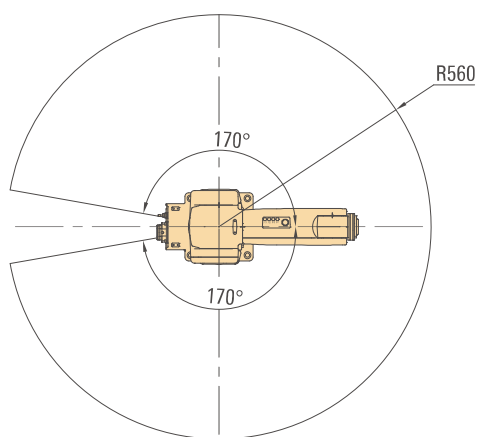
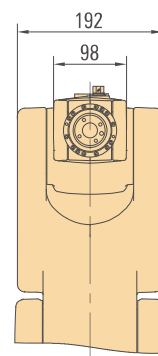
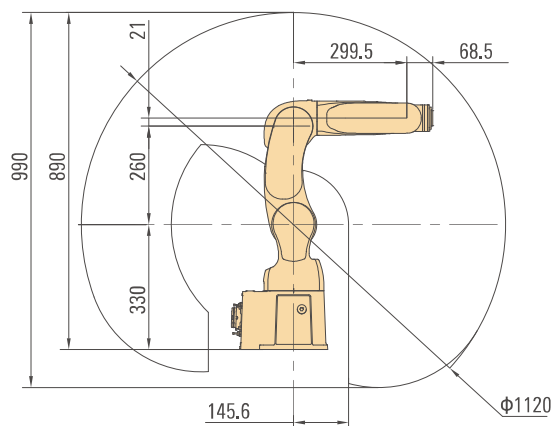
型号 Type		AIR4-560A
轴数 Axes		6
负载 Payload		4kg
机器人本体 Manipulator	重量 Weight	23kg
	最大运动范围 Reach	560mm
定位精度 Positioning accuracy	位置重复定位精度 Position repeatability	±0.02mm
IP 等级 Ingress Protection		IP65
安装方式 Mounting		地装 / 壁装 / 吊装 Floor/ wall/ ceiling
运动范围 Working range	轴 1* Axis 1 rotation	-170°/+170°
	轴 2 Axis 2 arm	-110°/+120°
	轴 3 Axis 3 arm	-108°/+152°
	轴 4 Axis 4 wrist	-200°/+200°
	轴 5 Axis 5 bend	-118°/+118°
	轴 6 Axis 6 turn	-350°/+350°
运动速度 Rotation rate	轴 1 Axis 1 rotation	450°/s
	轴 2 Axis 2 arm	450°/s
	轴 3 Axis 3 arm	525°/s
	轴 4 Axis 4 wrist	600°/s
	轴 5 Axis 5 bend	600°/s
	轴 6 Axis 6 turn	800°/s
适用控制柜 Controllers		inCube20/ARC5-12
安装条件 Mounting conditions		环境温度: 0~45℃ Ambient temperature: 0~45℃ 湿度: 恒温下 95% 以内, 无凝露。 Humidity: not more than 95% at constant temperature without condensation. 允许高度: 操作机正常工作环境的海拔高度不应超过 1000 米 (在 1000 米~4000 米高度范围内, 操作机应降额使用)。 Allowable altitude: not more than 1000m above sea level. 不应有腐蚀性、可燃性、易爆性气体。 No corrosive, flammable or explosive gases.

机体内配线 • 配管 Integrated dressing

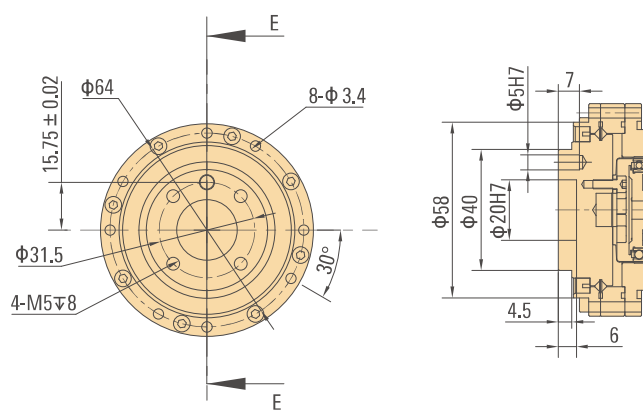


* 若去除机械限位, 运动范围可达 -180°/+180°。
If the mechanical limit is removed, the working range can reach -180°/+180°.

外形尺寸及运动范围 Outline dimension and Working range

肘部孔位图
Elbow arm

法兰图 Flange drawing



底座安装图 Base installation drawing

