

两种出线方式  
Two connection outlets



| 型号 Type                      |   | AIR4-560B                            |
|------------------------------|---|--------------------------------------|
| 轴数 Axes                      |   | 6                                    |
| 负载 Payload                   |   | 4kg                                  |
| 机器人本体<br>Manipulator         | 重量 Weight   | 24kg                                 |
|                              | 最大运动范围 Reach  | 560mm                                |
| 定位精度<br>Positioning accuracy | 位置重复定位精度<br>Position repeatability  | ±0.02mm                              |
| IP 等级 Ingress Protection     |   | IP67                                 |
| 安装方式 Mounting                |   | 地装 / 壁装 / 吊装<br>Floor/ wall/ ceiling |
| 运动范围<br>Working range        | 轴 1* Axis 1 rotation  | -170°/+170°                          |
|                              | 轴 2 Axis 2 arm  | -110°/+120°                          |
|                              | 轴 3 Axis 3 arm  | -108°/+148°                          |
|                              | 轴 4 Axis 4 wrist  | -200°/+200°                          |
|                              | 轴 5 Axis 5 bend   | -120°/+120°                          |
|                              | 轴 6 Axis 6 turn   | -350°/+350°                          |
| 运动速度<br>Rotation rate        | 轴 1 Axis 1 rotation   | 450°/s                               |
|                              | 轴 2 Axis 2 arm  | 370°/s                               |
|                              | 轴 3 Axis 3 arm  | 505°/s                               |
|                              | 轴 4 Axis 4 wrist  | 600°/s                               |
|                              | 轴 5 Axis 5 bend   | 560°/s                               |
|                              | 轴 6 Axis 6 turn   | 850°/s                               |
| 适用控制柜 Controllers            |   | inCube20/ARC5-12                     |
| 安装条件<br>Mounting conditions  | 环境温度: 0~45℃<br>Ambient temperature: 0~45℃   |                                      |
|                              | 湿度: 恒温下 95% 以内, 无凝露。<br>Humidity: not more than 95% at constant temperature without condensation.                             |                                      |
|                              | 允许高度: 操作机正常工作环境的海拔高度不应超过 1000 米 (在 1000 米~4000 米高度范围内, 操作机应降额使用)。<br>Allowable altitude: not more than 1000m above sea level. |                                      |
|                              | 不应有腐蚀性、可燃性、易爆性气体。<br>No corrosive, flammable or explosive gases.  |                                      |
|                              |   |                                      |

\* 若去除机械限位, 运动范围可达 -180°/+180°。  
If the mechanical limit is removed, the working range can reach -180°/+180°.

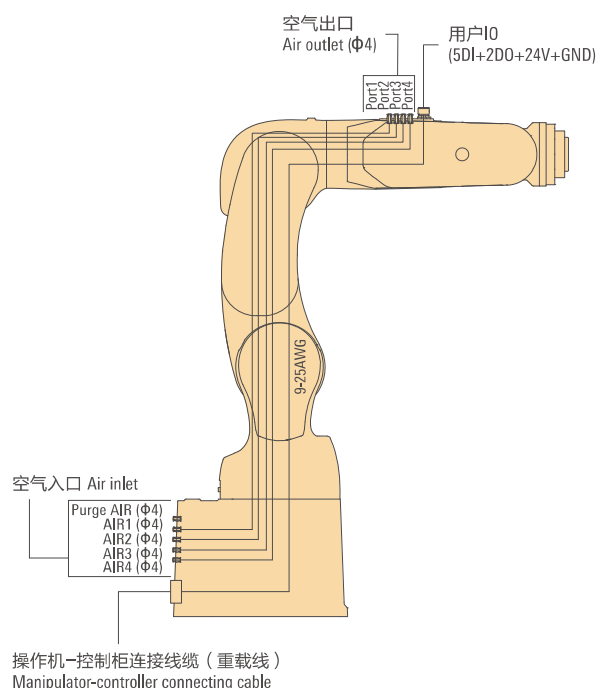
## AIR4-560B

高速度  
高精度  
高稳定性  
小巧、敏捷  
高防护等级

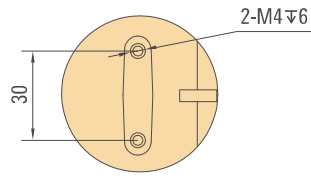
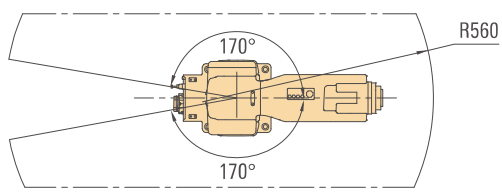
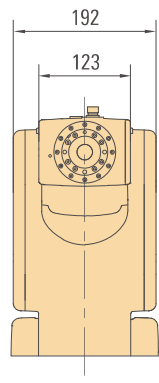
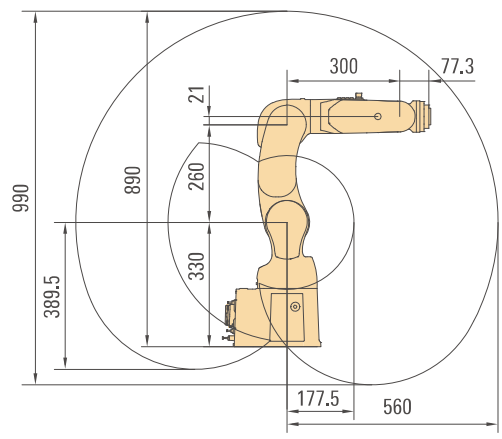
High speed  
High precision  
High stability  
Small and Agile  
IP67

- 中空手腕, 6 轴法兰中空设计, 便于腕部布管布线, 非常适合狭小空间内作业。  
Axis 6 hollow flange design, which is convenient for piping and wiring on the wrist, very ideal for narrow space operation.
- IP67 更高防护等级, 适合机床内潮湿、灰尘和油雾等恶劣条件下运行。  
Higher protection level of IP67, suitable for operating under harsh conditions such as humidity, dust and oil mist.
- 标准循环时间小于 0.33s, 满足追求最短循环时间和最高产量的需求。  
The standard cycle time is less than 0.33s, meeting your pursuit of the maximum output within the shortest time.
- 专用的电机散热设计, 轻松应对 3C 行业高强度高频次重复运动产生的高发热。  
Advanced heat dissipation design of motor, enables AIR4-560B to easily cope with the high heat generated by the high-intensity repetitive operation in the 3C industry.

### 机体内配线 • 配管 Integrated dressing

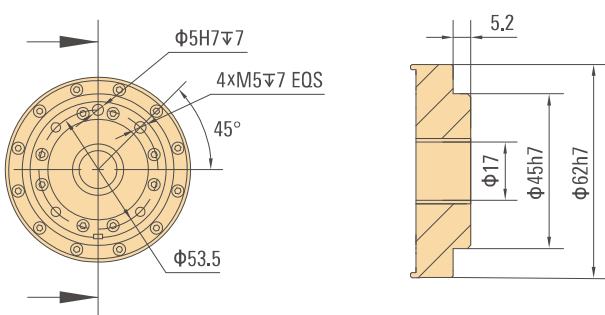


外形尺寸及运动范围 Outline dimension and Working range



肘部孔位图  
Elbow arm

法兰图 Flange drawing



底座安装图 Base installation drawing

